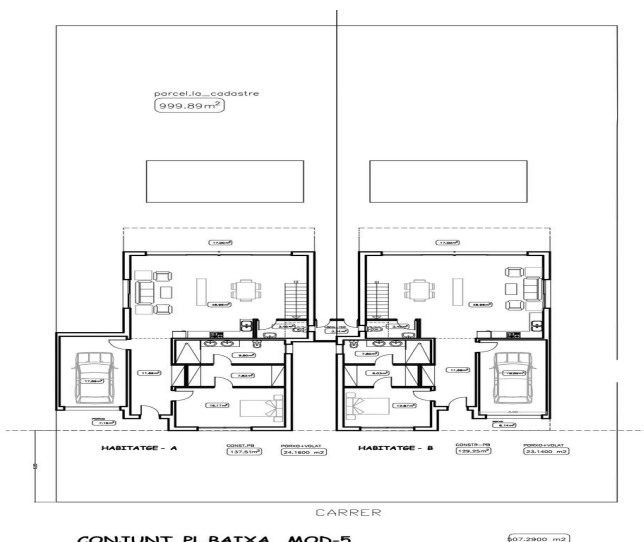
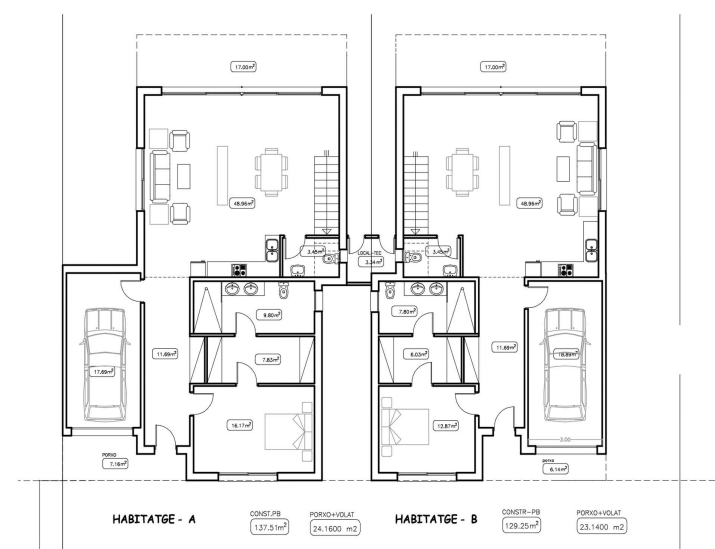




CONJUNT PLTIS MOD-5



CONJUNT PL.BAIXA MOD-5



Transaction	Sale
Category	House with mooring
Work category	New construction
Surface area	144 m ²
Rooms	5
Bathrooms	4 bathrooms , 1 toilet
Parking	Yes
Garage	Yes
Terrace	Yes
Garden	Yes
Mooring	Yes
Swimming pool	Yes
Central heating	Yes
Air conditioning	Yes
Land	507 m ²
Canal	Yes

A-1946 Empuriabrava

New development in Norfeu, house on canal with private mooring of 12m. 507m² of land.

The house has a plot of 507m² and a living area of 144,32m².

On the ground floor we find a bedroom with bathroom, a toilet and a large living room with open kitchen of 40.86m² from the large windows we have access to the pool, jacuzzi and garden from where we have access to the mooring of 12m.

We have a garage of 18.89m² and parking inside the plot.

On the first floor there are two en-suite bedrooms, two double bedrooms and a complete bathroom.

1.350.000 €



