

Ground in Puig Rom

Land with unbeatable views of Roses, Costa Brava. There is an approved preliminary project for a 1 and 2-story house based on the surface chart.

The constructed area of the plot in Roses is 115 m2 of housing, 18.50 m2 of porch and 42 m2 of garage, with a total constructed area of 175.50 M2.

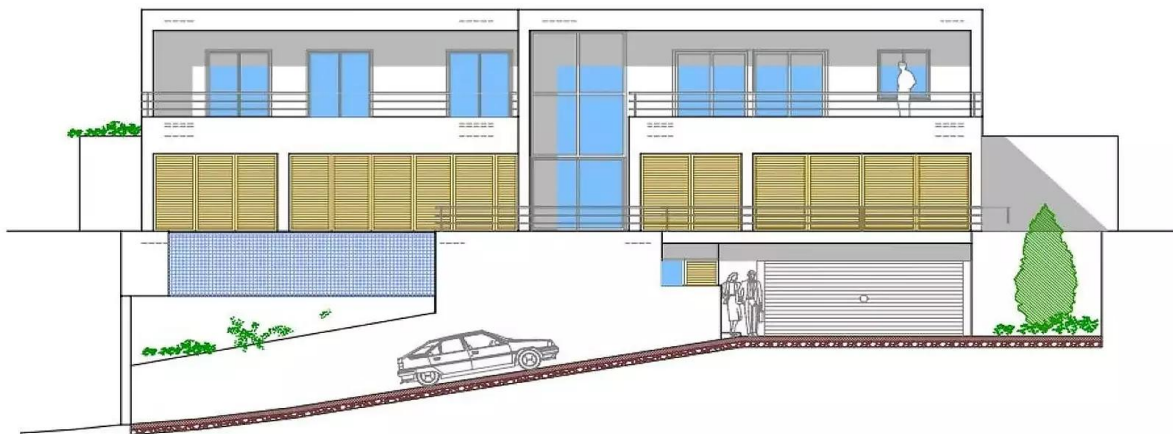
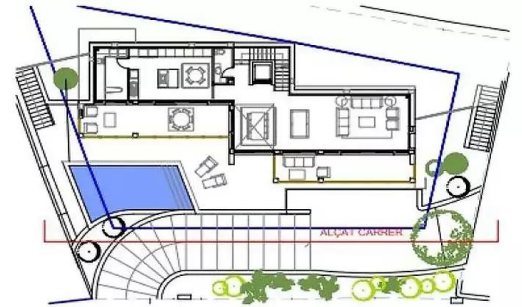
The details of the structure, type of slab, envelope system and interior walls, façade, interior walls, type of roof, coatings, façade finish, interior finishes, type of plaster, exterior flooring will be able to have quality memory information. printed reinforced concrete in road traffic areas, interior flooring, with porcelain stoneware, interior carpentry details, exterior carpentry. The detail of a very spacious kitchen with custom furniture, installations, bathrooms, electrical installation, air conditioning installation, ACS solar installation, ventilation installation, TV installation, and intercom installation. 7x3 pool, with a good perimeter crown with natural stone and the fencing of the plot in Roses.

Have a plot in Roses, with a great attractive price-quality ratio.

Transaction	Sale
Category	Plot
Work category	New construction
Situation	Calle Pujada al Puig Rom, Roses
Occup. cert.	
Condition	

279.000 €





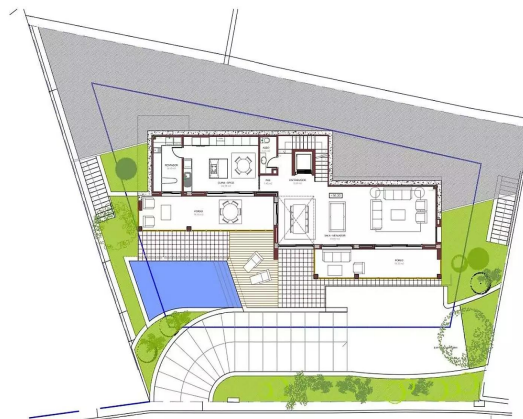
ALÇAT SUD (CARRER)





F. 1 ^a PLANTA		Superficie m ²	
INDEPENDIENTE		86,70	
TOTAL		86,70	

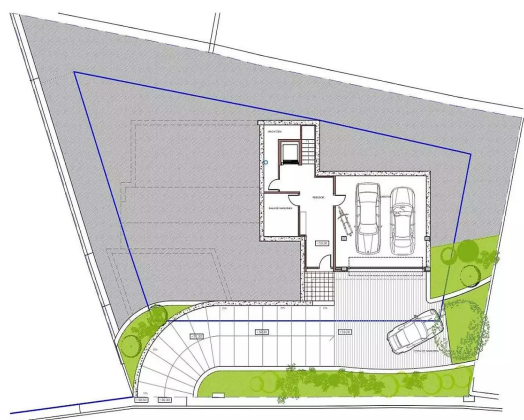
F. 2 ^a PLANTA		Superficie m ²	
INDEPENDIENTE	121,149	138,891	
TOTAL		138,891	



F. 3 ^a PLANTA		Superficie m ²	
INDEPENDIENTE		81,83	
TOTAL		81,83	

F. 4 ^a PLANTA		Superficie m ²	
INDEPENDIENTE	105,80	124,33	
TOTAL		124,33	

F. 5 ^a PLANTA		Superficie m ²	
INDEPENDIENTE		36,00	
TOTAL		36,00	



F. 6 ^a PLANTA		Superficie m ²	
INDEPENDIENTE		80,30	
TOTAL		80,30	

F. 7 ^a PLANTA		Superficie m ²	
INDEPENDIENTE	84,29	46,29	
TOTAL		46,29	

F. 8 ^a PLANTA		Superficie m ²	
INDEPENDIENTE	82,35	81,92	
TOTAL		81,92	

