

Ground in Puig Rom

Land with unbeatable views of Roses, Costa Brava. There is an approved preliminary project for a 1 and 2-story house based on the surface chart.

The constructed area of the plot in Roses is 115 m2 of housing, 18.50 m2 of porch and 42 m2 of garage, with a total constructed area of 175.50 M2.

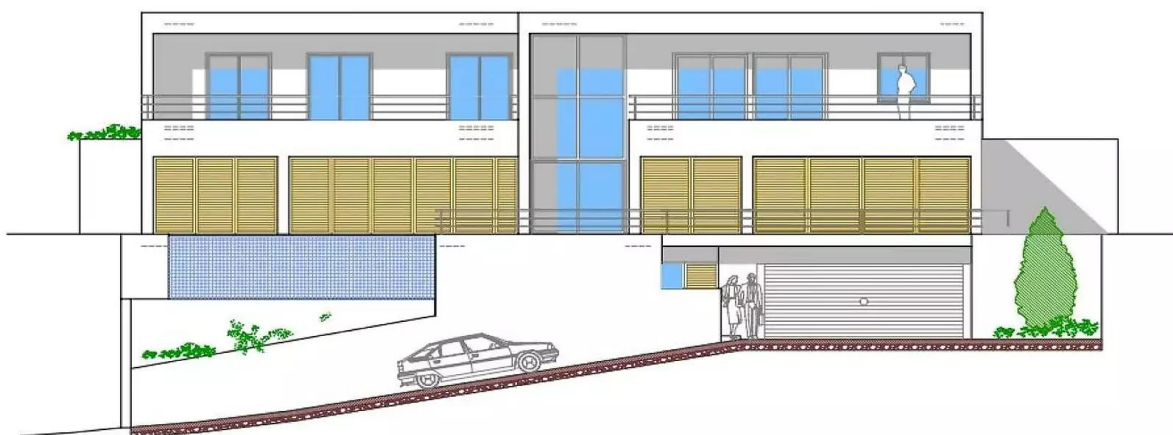
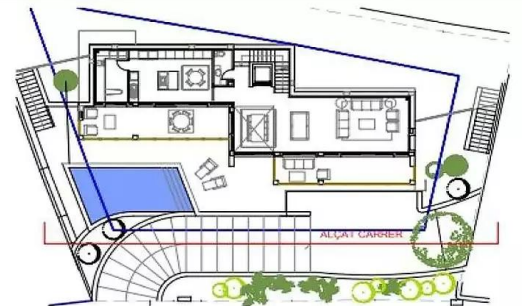
The details of the structure, type of slab, envelope system and interior walls, façade, interior walls, type of roof, coatings, façade finish, interior finishes, type of plaster, exterior flooring will be able to have quality memory information. printed reinforced concrete in road traffic areas, interior flooring, with porcelain stoneware, interior carpentry details, exterior carpentry. The detail of a very spacious kitchen with custom furniture, installations, bathrooms, electrical installation, air conditioning installation, ACS solar installation, ventilation installation, TV installation, and intercom installation. 7x3 pool, with a good perimeter crown with natural stone and the fencing of the plot in Roses.

Have a plot in Roses, with a great attractive price-quality ratio.

Transaction	Sale
Category	Plot
Work category	New construction
Municipality	Puig Rom

300.000 €





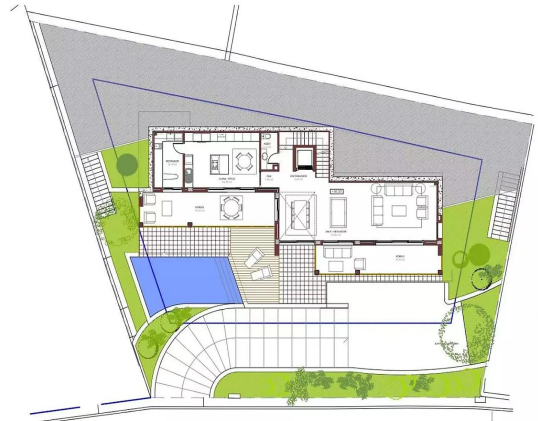
ALÇAT SUD (CARRER)





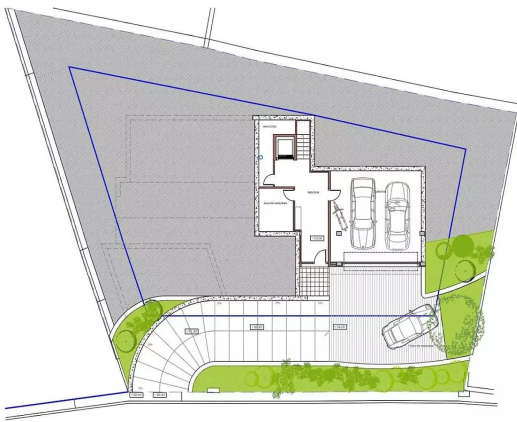
F. 1ª		
Superfície m²	Superfície m²	Superfície m²
INDEPENDENT	86,70	
TOTAL	86,70	

F. 1ª	Superfície m²	Superfície m²	Superfície m²
INDEPENDENT	86,70	11,80	11,80
TOTAL	130,30		



F. 1ª		
Superfície m²	Superfície m²	Superfície m²
INDEPENDENT	86,70	
TOTAL	86,70	

F. 1ª	Superfície m²	Superfície m²	Superfície m²
INDEPENDENT	86,70	11,80	11,80
TOTAL	130,30		



F. 2ª		
Superfície m²	Superfície m²	Superfície m²
INDEPENDENT	28,00	
TOTAL	28,00	

F. 2ª	Superfície m²	Superfície m²	Superfície m²
INDEPENDENT	28,00	11,80	11,80
TOTAL	59,80		

